

**iPolymer Water Valve (WV)** is manufactured in two material choices: Polypropylene or PVDF. The valve has a spring return and is pneumatically actuated to open or close depending upon the model.

The valve is compact and comes with four tapped holes on the base for ease of mounting.

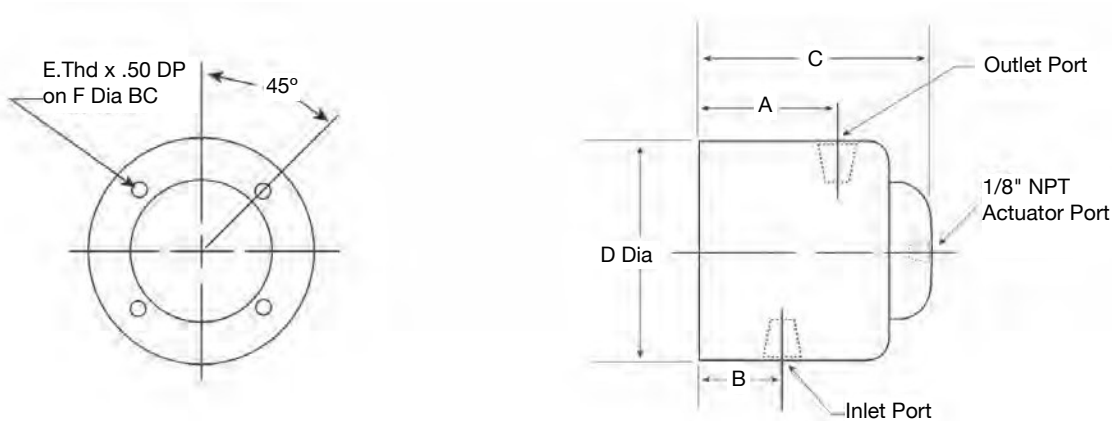
### Applications

The iPolymer Water Valve is primarily used for purified water applications, DI water applications and controlled process tank applications. The Polypropylene and PVDF configurations of this valve can be used for numerous mild chemical applications. These include rinsing, blending, and other pneumatically controlled process applications.



### Specifications

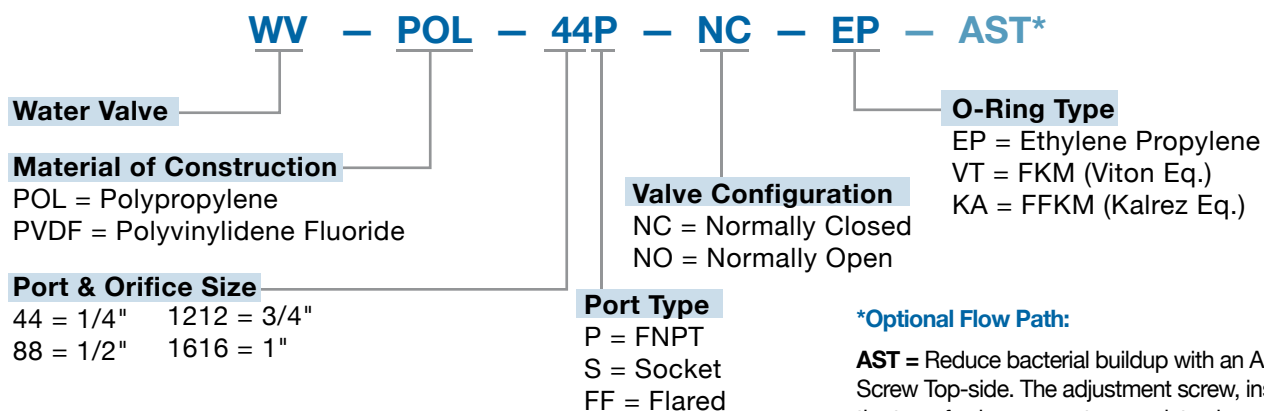
Size	1/4" Orifice	1/2" Orifice	3/4" Orifice	1" Orifice
Cv	0.8	2.8	7.5	13.5
Max Pressure Inlet	80 psi	80 psi	60 psi	60 psi
Max Media Temperature				
Poly		140°F / 60°C		
PVDF		212°F / 100°C		
Actuator Pressure (min/max)		35 / 70 psi		



Size	A	B	C	D Dia	E Thd	F Dia
1/4"	1.52	1.00	2.44	2.25	1/4" - 20 UNC-2B	1.81
1/2"	1.69	.96	2.78	2.75	1/4" - 20 UNC-2B	2.00
<b>1/2"</b>	<b>1.15</b>	<b>1.15</b>	<b>2.25</b>	<b>2.75</b>	<b>1/4" - 20 UNC-2B</b>	<b>2.00</b>
3/4"	2.28	1.33	3.66	3.00	1/4" - 20 UNC-2B	2.50
1"	2.83	1.69	4.43	4.00	1/4" - 20 UNC-2B	3.44

**Low Profile** = Low Profile (in line) water valve - see IWV ordering format information below.

## Water Valve: ORDERING FORMAT



### \*Optional Flow Path:

**AST** = Reduce bacterial buildup with an Adjustment Screw Top-side. The adjustment screw, installed at the top of valve, prevents complete closure thereby allowing a controlled drip. Ideal for DI Water applications. Only available to "NO" configurations.

**ASB** = Create a metering effect with an Adjustment Screw Bottom-side. The adjustment screw, installed at the bottom of the valve, meters the orifice opening. Only available to "NC" configurations.

**ATB** = Combine both optional features into one valve (AST + ASB) with Adjustment Screws Top-side & Bottom-side for both controlled drip and orifice metering. Only available to "NC" configurations.

<b>IWV</b> INLINE (Low Profile) WATER VALVE	<b>POL</b> Materials of Construction POL = Polypropylene PVDF = Polyvinylidene Fluoride	<b>2C8</b> Valve Configuration 1/2" 2 Way Normally Closed	<b>EP</b> O-Ring Type EP = Ethylene Propylene VT = Viton KA = Kalrez
---	--	---	--

### iPolymer Product Notes:

- Please email Customer Service at [info@ipolymer.com](mailto:info@ipolymer.com)
- Call us for special applications. We can manufacture our Valves with special mounting and interface dimensions.
- Upon request, alternate material selection from those listed will allow for expanding temperature ratings or other performance characteristics.
- Unauthorized disassembly of this product will void the original factory one-year product warranty. For further details please contact your local Distributor or our factory directly.

200304