

Our **iPolymer Pressure Relief Valve (PRV)** is constructed with a 100% pure PTFE Valve Body and Valve Plug. The single O-Ring design allows user selection of EP, FKM (Viton Eq.) or FFKM (Kalrez Eq.) depending on the flowing media.

The iPolymer PRV is factory configured for a 10 psi to 90 psi pressure range.



The relief valve is fully adjustable within this range by simply adjusting the upper Socket Hex Adjustment Screw and locking in place with the associated locking nut.

Our iPolymer Pressure Relief Valve is configured with three Upper Housing and Lower Base options: Polyvinylidene Fluoride (“PVDF”), Polypropylene (“PP”) or Anodized Aluminum (“AA”) as shown.

## Applications

- Pump Pressure Relief
- Expansion Container Pressure Relief
- Flow Channel Pressure Relief
- Safety Relief from water hammer
- System protection for individual low pressure component in circuit

## Features:

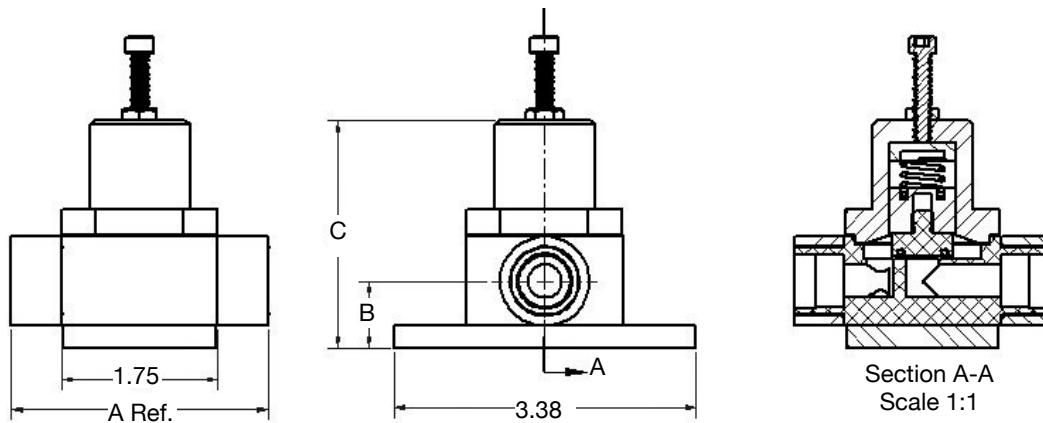
- All Wetted High-Purity Flow Path
- Ideal for Harsh Chemicals
- Fully Adjustable within an 80 psi selected range
- Teflon Coated Spring is isolated from media

## Options:

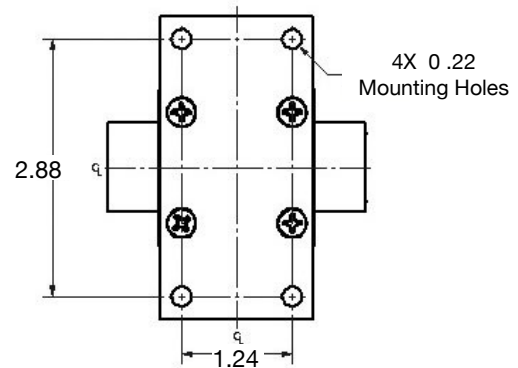
- Low Range Specifications are available (3 - 25 psi range).

Call Factory with  
Special Requests

Temperature Range	
Ambient	
AA	0°C - 150°C
PVDF	0°C - 100°C
PP	0°C - 60°C
Media	
AA	0°C - 150°C
PVDF	0°C - 100°C
PP	0°C - 60°C



PORT	A	B	C
1/4" Pipe	2.87	0.75	2.55
1/4" Tube	3.44	0.75	2.55
1/4" Flared	4.07	0.75	2.55
3/8" Pipe	2.87	0.75	2.55
3/8" Tube	3.44	0.75	2.55
3/8" Flared	4.09	0.75	2.55
1/2" Pipe	3.25	0.84	2.73
1/2" Tube	3.65	0.84	2.73
1/2" Flared	4.34	0.84	2.73



## Pressure Relief Valve: ORDERING FORMAT

**PRV - 4 4 P - EP - AA - 25**

### Porting w/ Max Orifice

PIPE	
44	1/4" FNPT & 0.250" Orifice
66	3/8" FNPT & 0.375" Orifice
86	1/2" FNPT & 0.375" Orifice
TUBE	
43	1/4" TUBE & 0.188" Orifice
65	3/8" TUBE & 0.313" Orifice
86	1/2" TUBE & 0.375" Orifice
FLARE	
42	1/4" FLARE & 0.125" Orifice
64	3/8" FLARE & 0.250" Orifice
86	1/2" FLARE & 0.375" Orifice

Sanitary End and Male NPT Connections are available as special orders

Low Range Pressure (3-25 psi)

### Upper Housing & Base Plate

AA = Anodized Aluminum  
PP = Polypropylene  
PVDF = Polyvinylidene Fluoride

### O-Ring Type

EP = EPDM  
KA = FFKM (Kalrez Eq.)  
VT = FKM (Viton Eq.)

### Port Connection

P = FNPT  
T = Tube  
FF = Flare

### iPolymer Product Notes:

1. Please email Customer Service at [info@ipolymer.com](mailto:info@ipolymer.com)
2. Call us for special applications. We can manufacture our Valves with special mounting and interface dimensions.
3. Upon request, alternate material selection from those listed will allow for expanding temperature ratings or other performance characteristics.
4. Unauthorized disassembly of this product will void the original factory one-year product warranty. For further details please contact your local Distributor or our factory directly.

200304