



Chemical Resistant Valves

Chemical Resistant (CR) Valves offer chemical and corrosion control through a complete fluoroplastic design and construction. All wetted surfaces are manufactured from virgin PTFE. Pneumatic Actuator, Base and Bands are constructed from PVC, Polypropylene or PVDF. The polymer components selected for our iPolymer CR Valve line are specifically suited for use with ultrapure water, deionized water, solvents, chemicals and liquid flowing bio-matter. Our PTFE Bellows-style valve stem and PTFE valve seat help ensure the valve self-flushes a wide variety of flowing media. Special custom configurations are available on request. These include: manifold valve assemblies with multiple ports and high ambient temperature pneumatic actuators.



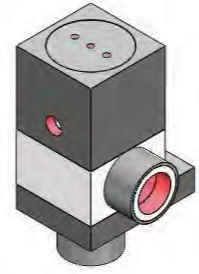
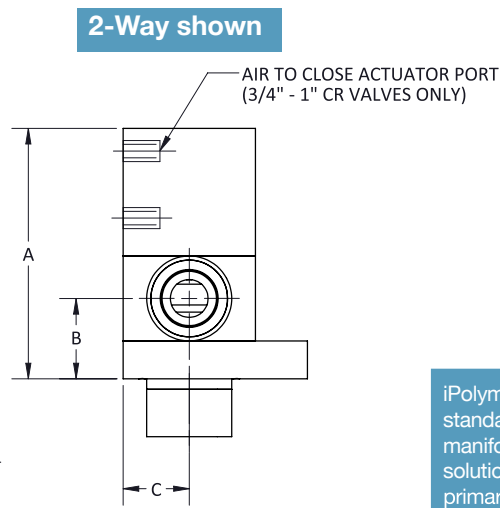
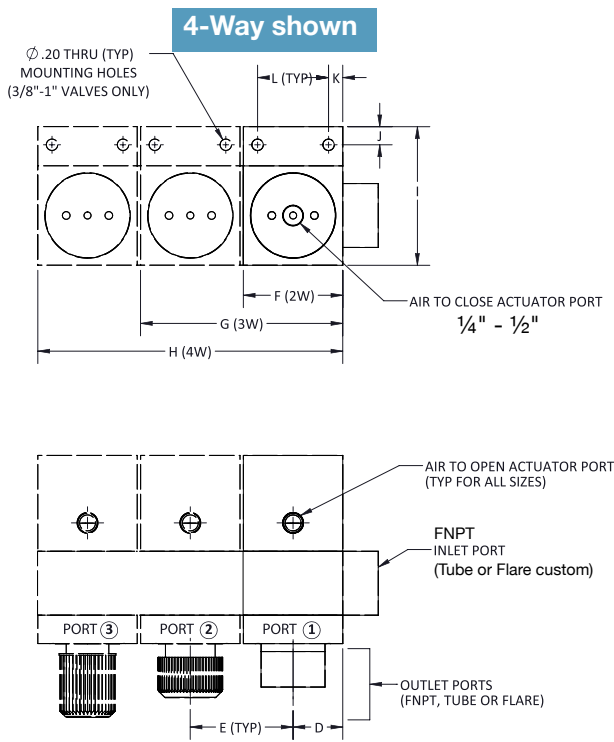
Flow for distribution (*One Inlet & Multiple Outlets*) and **flow for blending or selection** (*Multiple Inlets & One Outlet*) available.

- Distribution flow is standard.
- Please specify at time of order.

Size	1/4"	3/8"	1/2"	3/4"	1"
Cv	0.8	1.3	2.8	7.5	13.5
Flow Rate (GPM @ 60 psi)	4.6	6.3	10.7	23	42
Max Pressure (Distribution Flow)¹					
Inlet Port-psi	60	60	60	60	60
Outlet Port-psi	60	50	50	30	20
Actuator Pressure (Min/Max)	40 / 60	40/60	40 / 60	50 / 70	50 / 70
Max Media Temperature (PVDF)	240°F	240°F	240°F	240°F	240°F
Max Ambient Temperature	140°F	140°F	140°F	140°F	140°F
Wetted Surfaces	PTFE	PTFE	PTFE	PTFE	PTFE
Actuator / Base / Bands <i>(see notes on page 2)</i>	PVC, POL, PVDF	PVC, POL PVDF	PVC, POL PVDF	PVC, POL PVDF	PVC, POL PVDF
Actuator Port (see sketch)	10-32 UNF	1/8" FNPT	1/8" FNPT	1/8" FNPT	1/8" FNPT
Inlet Port (FNPT = Standard)	1/4"	3/8"	1/2"	3/4"	1"
Outlet Port (FNPT, Tube or Flare)	1/4"	3/8"	1/2"	3/4"	1"

¹ Pressure listed for Distribution Flow Configuration.
Call iPolymer Factory for Selection Flow Configuration.





iPolymer CR Valve is supplied standard ("CR") with a single axial manifold FNPT style port. Custom solutions are available with this primary manifold port configured for Tube or Flared connections ("CRT" and "CRF"). Please call factory.

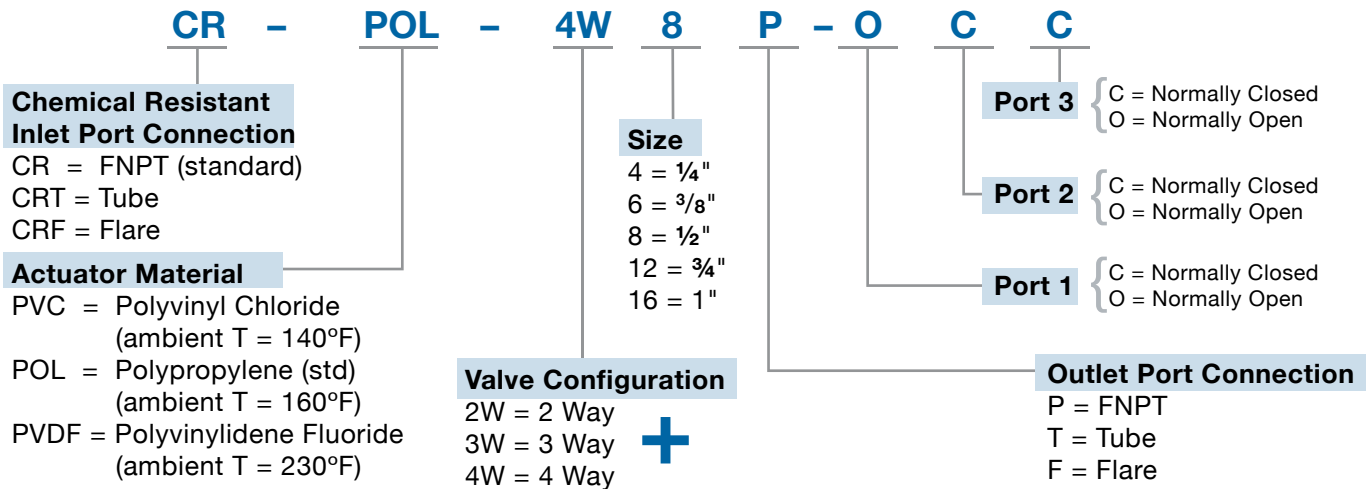
Flow Options Available for the iPolymer CR Valve: Flow for Distribution (one inlet / multiple outlets) and Reverse Flow for Blending or Selection (multiple inlets / one outlet).

The 1/4" CR Model come complete with Aluminum Baseplate.

The 3/8" through 1" CR Models come complete with Reinforcing Bands & Baseplates which match the selected Actuator Material (PVC, POL or PVDF).

Size	A	B	C	D	E	F	G	H	I	J	K	L	M
1/4"	2.19	0.69	0.69	0.69	1.40	1.38	2.78	4.18	1.38	N/A	N/A	N/A	N/A
3/8" - 1/2"	3.31	1.06	0.88	0.88	1.81	1.75	3.56	5.37	2.44	0.32	0.25	1.25	0.20
3/4" - 1"	5.13	1.44	1.38	1.38	2.81	2.75	5.56	8.37	3.44	0.33	0.33	2.03	0.20

Chemical Resistant Valves: ORDERING FORMAT



+ Call iPolymer Factory for 5-Way to 14-Way Design Configurations.

iPolymer Product Notes:

1. Please email Customer Service at info@ipolymer.com
2. Call our iPolymer Factory for special applications. We can manufacture our CR Valves in multiple port distribution manifolds with a common inlet port and up to 14 outlet ports.
3. Upon request, alternate material selection from those listed will allow for expanding temperature ratings.
4. Unauthorized disassembly of this product will void the original factory one-year product warranty. For further details please contact your local Distributor or our factory directly.

200304

international polymer solutions inc. • manufacturer of high purity fluid handling products
www.ipolymer.com • info@ipolymer.com